

www.builditeco.com.au

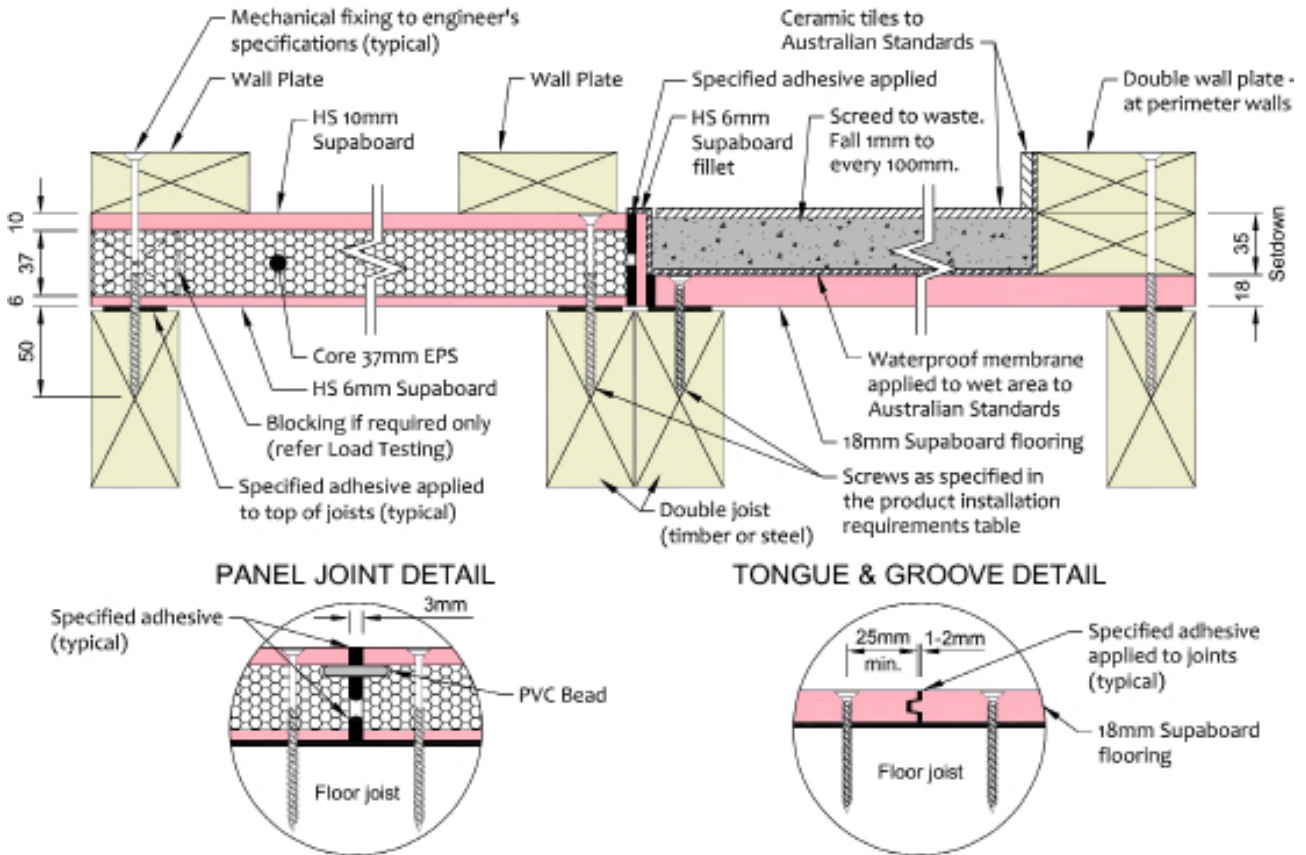


Subfloors with a difference

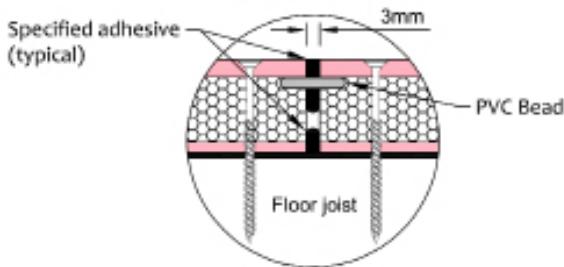
Designed with architects
and builders in mind

SUPAFLOOR
Subfloors by **BUILDITECO**

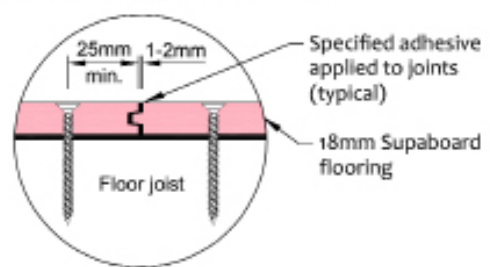
TYPICAL DETAIL (Subject to final engineering design)



PANEL JOINT DETAIL



TONGUE & GROOVE DETAIL



Technical performance of SUPAFLOOR

Acoustic

AIRBORNE NOISE

SUPAFLOOR has been field tested to ISO 717-1 and achieved a result of 51dB based on the following system -

1. 53mm SUPAFLOOR
2. 240mm Timber Smart Joist
3. R4.0 Cavity Fibreglass Insulation
4. 70mm Underside Resilient Mounts
5. 16mm Fire Rated Plasterboard Ceiling

IMPACT NOISE

SUPAFLOOR has been field tested to ISO 717-2 and ISO 140-7 and achieved a result of 59dB Bare Panel Impact Noise and 57 LnTw Resultant Noise

Structural

OFFICE & RESIDENTIAL

53mm SUPAFLOOR
3.00 kPa Uniform Load
2.70 kN Concentrated Load (AS1170.1)

Maximum wall point load 2.7kN, for loads greater than this must provide blocking between wall frame and floor frame

JOISTS

600mm maximum joist spacing for both SUPAFLOOR and 18mm SUPABOARD

Fire

NON-COMBUSTIBLE

Supaboard has been tested to AS1530.1 and is deemed non-combustible. SUPAFLOOR complies with the Bushfire Standard as a sub-floor system in BAL zones up to BAL 40

Handling

PANEL SIZE

2700mm x 1200mm
 Other sizes upon request

PANEL WEIGHT

19kg per square metre
 61kg per panel

About SUPAFLOOR

SUPAFLOOR is a lightweight flooring system suitable for new modular constructions, extensions and renovations and has proven acoustic and thermal performance. It can be applied to either steel or timber floor frames with up to 600mm spacings and then take a range of finishes including tiles, carpet, timber and vinyl. SUPAFLOOR is moisture resistant, easy to handle and can enhance the sub-floor installation process on your next building project.

SUPAFLOOR is considered as an upgrade or enhancement

when compared to particleboard flooring panels. When it comes to performance, SUPAFLOOR satisfies home owners as it has much better acoustic and insulative properties while carrying a much stronger structural feel. It is during planning and construction though, where architects and builders see the advantages. Design and engineering is simplified by having all joists at the same height and removing the need for a complex wet area set down. Since it is water resistant, SUPAFLOOR has no wet movement, so after rain, builders don't have to worry about sweeping away puddles or sanding back swollen panels.

1 Convenience

SUPAFLOOR has many advantages. It is light, easy to cut, comes in large panels and is resistant to moisture (that's right, no wet movement). All this leads to fast installation times and as an added bonus, SUPAFLOOR doesn't need a screed before putting tiles or timber flooring down.

2 Acoustic

SUPAFLOOR is a complete Composite Floor Panel System that gives a high level of acoustic insulation. The light-weight core material has the added benefit of absorbing impact noise while the external layers are made of high-strength SUPABOARD, which greatly reduces airborne noise.

3 Thermal

SUPAFLOOR offers high thermal efficiency by providing insulation through its unique design. It is a superior insulated floor system with an R Value of R1.2, making it an extremely suitable system for elevated floors or as an intermediate floor.



4 Fire

SUPAFLOOR is a bushfire resistant system suitable for use as a sub-floor in BAL zones up to BAL40. SUPABOARD has been tested to AS1530.1 and deemed to be 'non-combustible'.

Unique Wet Area

Supplied in panels of two different thicknesses, SUPAFLOOR has been designed to simplify the subfloor wet area set down requirement, making life easier for both architects and builders. The first panel is our 53mm product consisting of an insulative core that is sandwiched between two layers of high strength SUPABOARD technology. The second 18mm panel conveniently comes with a tongue and groove design and when installed, achieves an automatic set down and removes the need to check-out joists.

www.builditeco.com.au

SUPAFLOOR DISTRIBUTORS

WESTERN AUSTRALIA

Builditeco Pty Ltd
14/51 Prindiville Drive
WANGARA WA 6065

1300 088 165
info@builditeco.com.au

