



Supafloor Panel Flooring System

BuildItEco Supaboard and Supafloor Panels have unique features. They are rigid and extremely tough, but also practical and versatile, being suited to both domestic and Commercial construction.

The Supafloor Panel flooring system consists of Supafloor Panels used in dry areas and Supaboard flooring used for wet areas. The Supafloor panel consists of an upper layer of 10mm High Strength Supaboard, a 37mm M Grade Termite treated EPS core and a lower layer of 6mm Supaboard, giving a total thickness of 53mm. When used in conjunction with 18mm pre grooved Supaboard flooring, an automatic 35mm set down is achieved, obviating the necessity to check out joists.

Both products can be used with timber or steel floor joists, 450mm or 600mm spacings, in both new construction and renovations and extensions.

Both products can be finished with a wide variety of floor finishes including vinyl, carpet and tiling. Being highly water resistant, Supaboard is relatively unaffected by the unlikely event of a moisture membrane failure.

Supafloor Panel is a fully engineered and certified flooring system. The engineering certification report is available on request.

Using the Supafloor Panel flooring system on your next project will provide you with a cost effective alternative to traditional subfloor materials, with the added satisfaction of knowing you are using products with Superior sustainability and recycling credentials.

SPECIAL FEATURES

- 1. Acoustic Performance:** Supafloor Panel complies with the BCA requirement for impact noise loss between floors in multi-occupancy dwellings. As tested a result of L'nT,w 59 was obtained.
- 2. Insulating Performance:** Supafloor Panel will give an R1.2 increase in total R value to your complete floor system.
- 3. Termite Resistance:** Using RMAX Perform Guard EPS as the core material
- 4. Low embodied Energy:** Supaboard is also recyclable.
- 5. Asbestos free:** non-toxic and non-allergenic.
- 6. Moisture Resistant:** With no special requirements for on-going maintenance.
- 7. Unique:** 35mm set down allowing for screeds to get correct fall in wet areas. (water proofing membranes must be applied as required by the BCA).
- 8. Engineered:** Supafloor complies with the Australian Loading Code AS 1170.1 for both domestic and commercial applications.
- 9. Fast installation:** Due to the unique installation method.

Interested in using **Supafloor Panel** Flooring System in your next **building project**?

Contact Us 1300 088 165

Supafloor Panel Installation Info

To be read in conjunction with the Supaboard Flooring System Brochure and Installation Guide. Details given below are given as a guide for intended applications.

Product range

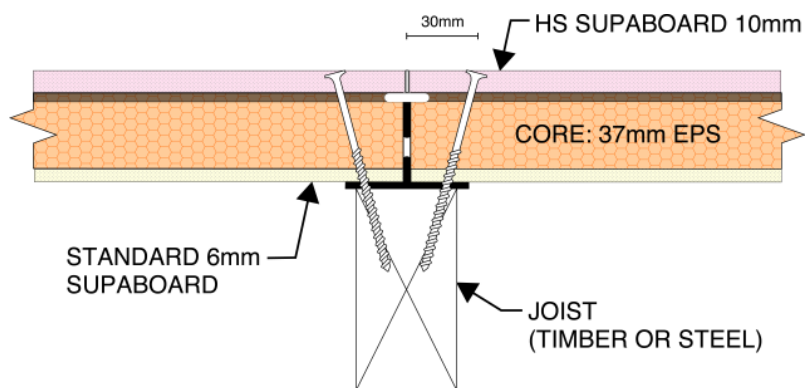
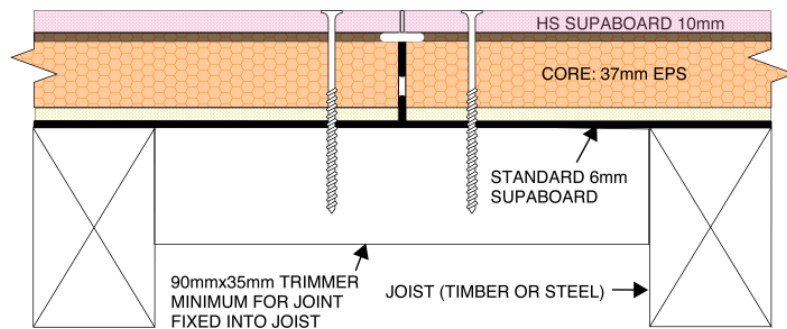
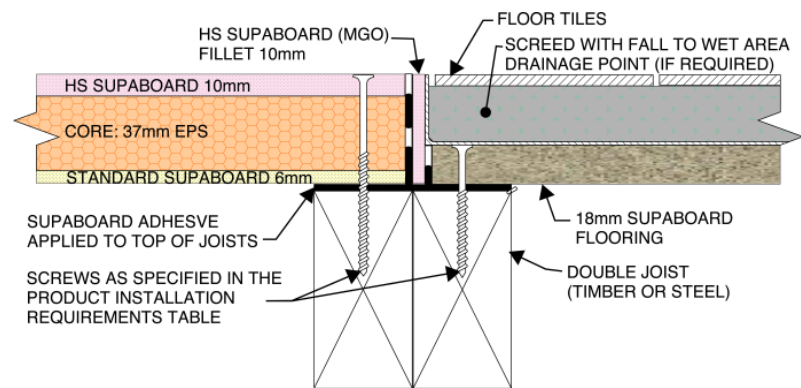
Supafloor Panels are available in the standard size is 2400mm x 1200mm and 2700mm x 1200mm. Other sizes available on special order 2700mm x 900mm, and 3000mm x 900mm. Standard Panel thickness is 53mm. Greater thickness to meet specific thermal requirements is available on request.

Joist types

Supafloor panels can be installed on timber and steel joist types with a maximum span up to 600mm as specified by the Structural Engineer.

Finishing

The complete floor should be sealed with SupaPrime or Dulux Green Render Sealer as soon as possible after installation. If the floor becomes wet from rain, allow to dry before sealing. Once the floor is sealed it can be exposed to weather for up to 3 months. Any type of final floor surface can be laid onto Supafloor Panel System, including carpet, tiles, solid timber and timber laminate finishes.



For full installation details download the complete **Supafloor Panel Installation Guide** at **SUPABOARD.COM.AU**

Interested in using **Supafloor Panel** flooring system in your next **building project**?

Contact Us 1300 088 165